



# **ONBOARDING (COURSE BRIEFING)**

**27 June 2025, 7:00pm (SGT)**

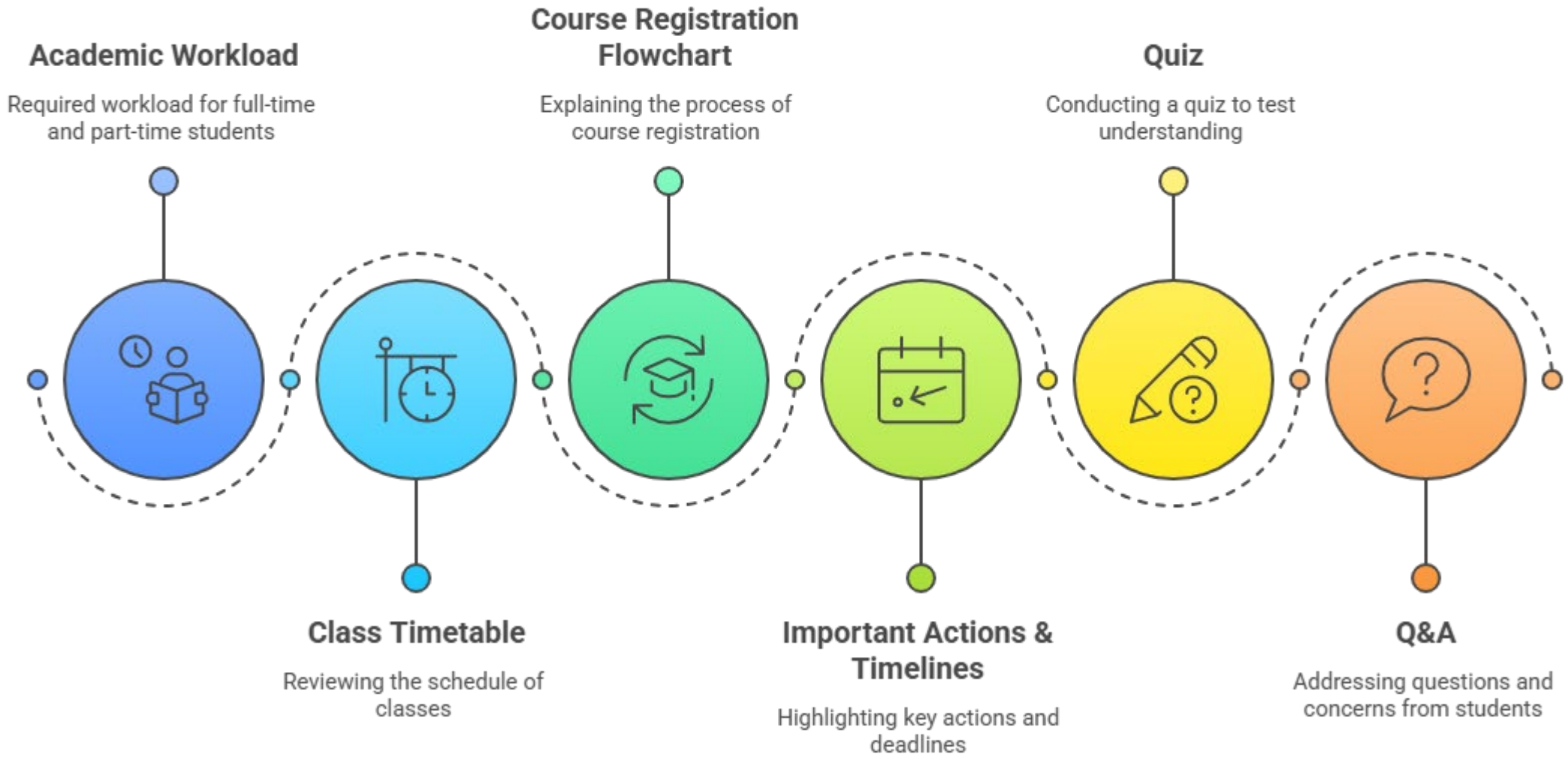
**LEADING FROM ASIA**



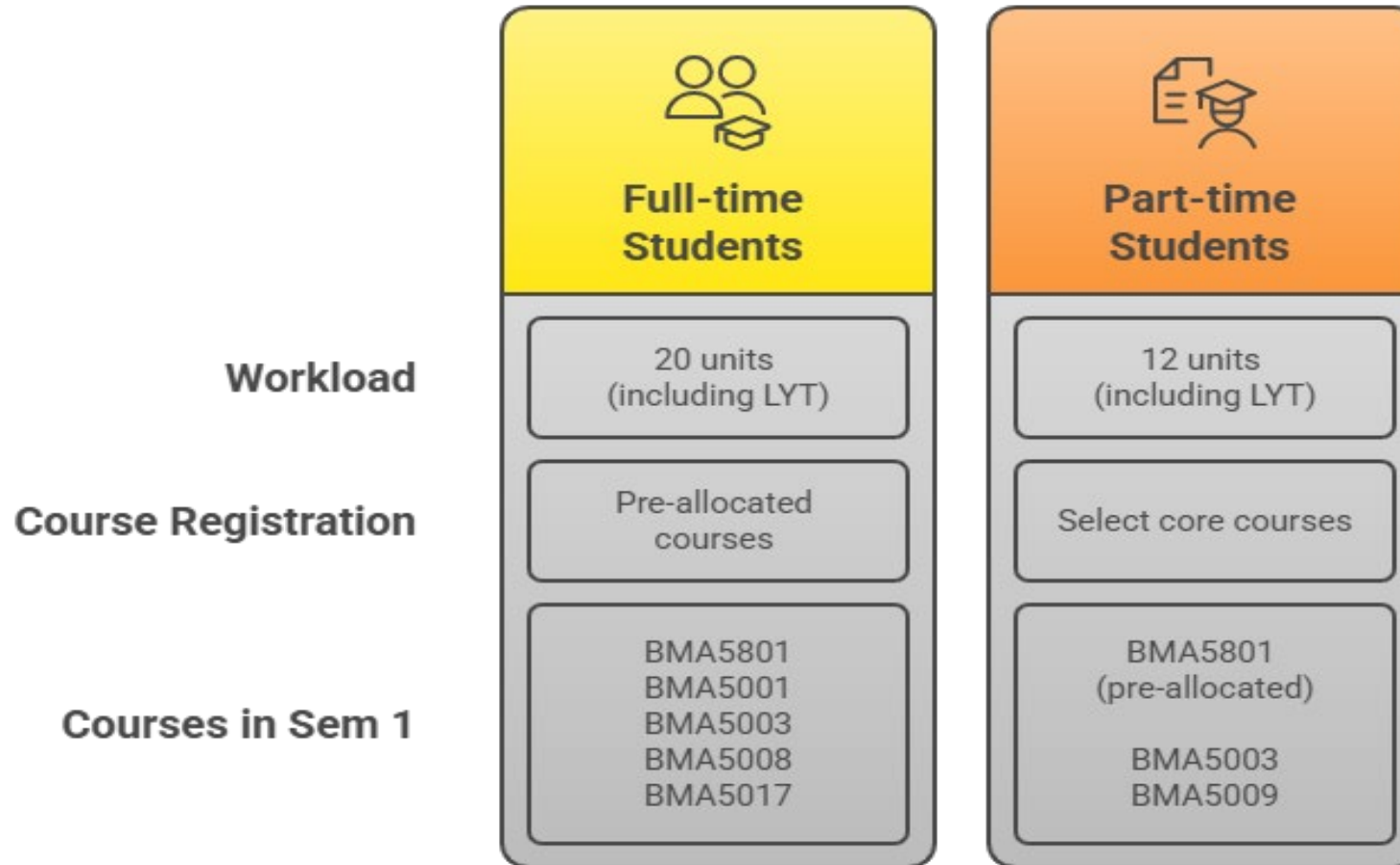
**NUS**  
National University  
of Singapore

**NUS**  
BUSINESS  
SCHOOL

# Course Engagement Agenda



## Academic Workload



**Note: Different curriculum requirement for HCM and RE; pre-allocated courses are different.  
We will share more in the respective webinars next week.**



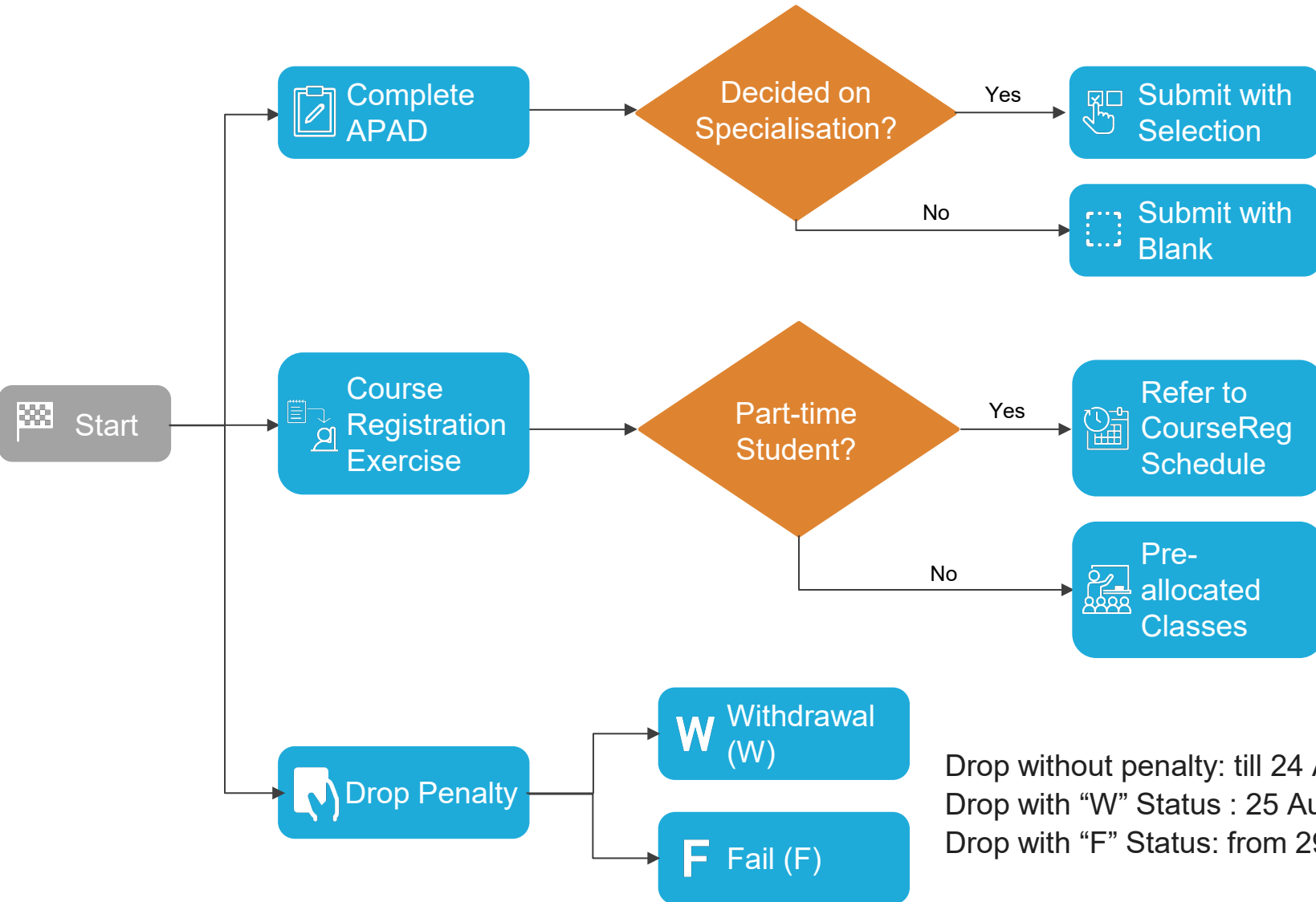
# NUS MBA Course Offering

Academic Year: 2025/2026  
Semester 1  
(11 August 2025 - 6 December 2025)



Day	Time	Venue	Course Code	Course Title	Unit	Course Type	Class Group	Instructor's Name	Department	Specialisation
Monday	8:30 am - 11:30 am	BIZ1/3-1	BMA5001	<a href="#">Managerial Economics</a>	4	Core	SF1	Xu Le	S&P	CON/AND/SNO
Monday	3:00 pm - 6:00 pm	BIZ1/3-1	BMA5001	<a href="#">Managerial Economics</a>	4	Core	SF2	Xu Le	S&P	CON/AND/SNO
Thursday	3:00 pm - 6:00 pm	BIZ1/3-2	BMA5003	<a href="#">Financial Accounting</a>	4	Core	SF2	Winston Kwok	ACC	FIN
Thursday	6:30 pm - 9:30 pm	BIZ1/3-2	BMA5003	<a href="#">Financial Accounting</a>	4	Core	SP2	Winston Kwok	ACC	FIN
Tuesday	3:00 pm - 6:00 pm	BIZ1/3-2	BMA5003	<a href="#">Financial Accounting</a>	4	Core	SF1	Winston Kwok	ACC	FIN
Tuesday	6:30 pm - 9:30 pm	BIZ1/3-2	BMA5003	<a href="#">Financial Accounting</a>	4	Core	SP1	Winston Kwok	ACC	FIN
Tuesday	12:00 pm - 3:00 pm	BIZ1/3-2	BMA5008	<a href="#">Financial Management</a>	4	Core	SF1	Hannes Wagner	FIN	FIN
Thursday	12:00 pm - 3:00 pm	BIZ1/3-2	BMA5008	<a href="#">Financial Management</a>	4	Core	SF2	Hannes Wagner	FIN	FIN
Thursday	6:30 pm - 9:30 pm	BIZ1/3-1	BMA5009	<a href="#">Marketing Strategy</a>	4	Core	SP2	Doreen Kum	MKT	MKT
Monday	6:30 pm - 9:30 pm	BIZ1/3-1	BMA5009	<a href="#">Marketing Strategy</a>	4	Core	SP1	Doreen Kum	MKT	MKT
Monday	6:30 pm - 9:30 pm	BIZ1/3-2	BMA5013	<a href="#">Corporate Strategy</a>	4	Core	SP1	Nitin Pangarkar	S&P	SNO
Thursday	6:30 pm - 9:30 pm	BIZ1/2-2	BMA5016	<a href="#">Leading with Impact</a>	4	Core	SP2	Audrey Chia	MNO	NA
Saturday	9:00 am - 12:00 pm	BIZ1/2-2	BMA5016	<a href="#">Leading with Impact</a>	4	Core	SP1	Audrey Chia	MNO	NA
Monday	3:00 pm - 6:00 pm	BIZ1/3-2	BMA5017	<a href="#">Managerial Operations and An</a>	4	Core	SF1	Joel Goh	DAO	ANO
Monday	8:30 am - 11:30 am	BIZ1/3-2	BMA5017	<a href="#">Managerial Operations and An</a>	4	Core	SF2	Joel Goh	DAO	ANO

# Course Registration Flowchart



## Applicable to ALL Students:

To complete APAD within this period:  
14 Jul (0900) – 18 Jul (1700)

Round 1: 21 Jul (0900)– 22 Jul (1200)  
Round 2: 29 Jul (0900) – 30 Jul (1200)  
Round 3: 4 Aug (0900) – 5 Aug (1200)

[CourseReg Schedule Link](#)

View allocated SF1/SF2 class group via  
EduRec > Academics > View Courses  
or Canvas by 21 July

Drop without penalty: till 24 Aug (2359)  
Drop with “W” Status : 25 Aug (0000 hrs) – 28 Sep (2359)  
Drop with “F” Status: from 29 Sep (0000)

# Important Actions & Timelines

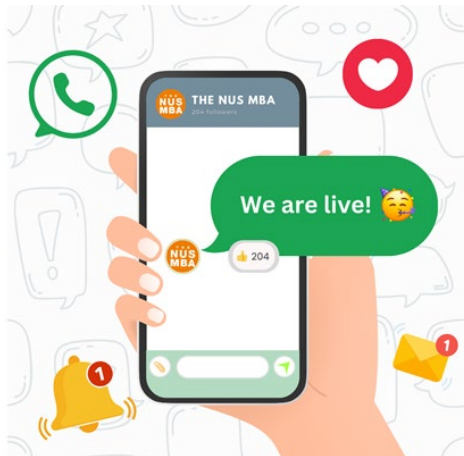
**ATTENTION  
REQUIRED!**

Action	Timeline	Instruction Details
Registration Part 1	<b>Before</b> 27 June 2025	Email from Admissions
Compulsory E-course: RC1000A - A Culture of Respect and Consent	<b>By</b> 30 June 2025	<a href="#">CANVAS Guide</a>
Access to THE NUS MBA Student Portal	Upon completing Registration Part 1	<a href="#">Link</a>
MBA Core Course Waiver Application (if applicable)	3 July (0900) to 9 July (1700)	<a href="#">Application Link</a>
Overloading Application (if applicable)	3 July (0900) to 9 July (1700)	<a href="#">Application Link</a>
Academic Plan Application / Declaration (compulsory for <b>ALL</b> students)	14 July (0900) to 18 July (1700)	<a href="#">Guide</a>   <a href="#">Video</a>
Course Registration (CourseReg) (compulsory for <b>PT</b> students)	<b>Round 1:</b> 21 Jul (0900) - 22 Jul (1200) <b>Round 2:</b> 29 Jul (0900) - 30 Jul (1200) <b>Round 3:</b> 4 Aug (0900) – 5 Aug (1200)	<a href="#">Guide</a>   <a href="#">Video</a>



# Join NUS MBA WhatsApp Channel

Students are strongly encouraged to join the NUS MBA WhatsApp channel dedicated to keeping you informed about all the latest events, activities, and important updates at the NUS Business School.



## How to Join?

Simply **scan** the QR code  
Click **Follow** on the top right of the screen  
And you will be **added** to the channel



WhatsApp  
Channel



Email queries to  
MBA Programmes Office

[mba\\_programmes@nus.edu.sg](mailto:mba_programmes@nus.edu.sg)

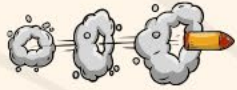
(please include your matriculation number in your email)

**\*\*SPECIAL NOTE\*\***

All communication will be sent to your NUS Email.  
MBA Programmes Office will not send to your  
personal email from 1<sup>st</sup> July onwards.







# QUIZ



**Please refer to the recordings for the Quiz questions and explanations!**

# Any Question

