

HEALTHCARE MANAGEMENT

THE NUS MBA



Professor Jason Yap

Saw Swee Hock School of Public Health

Programme Director,
National Preventive Medicine Residency

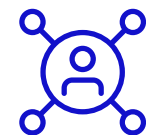


MBA with Specialisation in Healthcare Management

Offered in Conjunction with Saw Swee Hock School of Public Health (SSHSPH)



Saw Swee Hock
School of Public Health



Cross-Faculty
Specialisation

Required to decide/declare
at point of admission



Graduation
Requirement

Obtain min. 3.2 GPA to be
awarded degree



Fixed Study Plan

Because some core courses
are only offered once a year.



Financial Implication

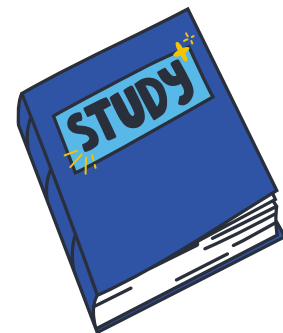
If students withdraw from
this specialisation after
starting the program

Points to Take Note

- Should not assume you should do it just because you work in healthcare.
- Geared towards delivery of healthcare in public/private hospitals, **LESS OF** supporting industries in pharma, medtech, startups or preparing you for leadership roles in healthcare industry.
- **NOT** recommended to take HCM if have plans for semester exchange (most modules from partner schools cannot be mapped back to NUS)
- SGD3,500 (excl. GST) will be charged for each 4 units of HCM course if student withdraws after he/she has read it.
- Mandatory to complete 4 HCM core + 1 HCM elective in NUS. Failure to complete the above 5 courses will not fulfil graduation requirement even if 68 units have been met for MBA graduation requirements.



Recommend Study Plans



Students are recommended to follow the study plans to avoid delays to completion.



Full - Time Study Plan

Part - Time Study Plan



MBA Student Portal

MBA with Specialisation in Healthcare Management			
Course Code	Course Name	Unit	Remark
BMA5001	Managerial Economics	4	
BMA5003	Financial Accounting	4	
BMA5008	Financial Management	4	Recommend to take prior to finance electives
BMA5009	Marketing Strategy	4	Recommend to take prior to marketing electives
BMA5013	Corporate Strategy	4	Strongly recommend to take only after completing BMA5003 and BMA5009
BMA5016	Leading with Impact	4	
BMA5017	Managerial Operations and Analytics	4	
BMA5801	Launch Your Transformation	4	
BMA5901	MBA Consulting Project	4	
MBA Toolkit Unit Requirement		4	To complete 4-unit in one of the semesters selected from courses listed under MBA Toolkit basket
Total MBA Core Unit Requirement		40	
SPH5007	Implementing Public Health Programmes and Policies	4	
SPH5401	Health Economics & Financing	4	
SPH5415	Healthcare Operations & Management	4	
SPH5418	Public Health Policy: A Systems Approach	4	
Total Core Unit Requirement in Healthcare Specialisation		16	
BMA****	MBA Electives	8	
SPH****	Healthcare Management Electives	4	Additional HCM electives will be charged
Total Electives Unit Requirement		12	
Total MBA with Healthcare Specialisation Requirements		68	

AMA: HCM



Ask-me Anything!

Ask Prof Yap anything you'd like to know about the HCM specialisation.

MOTIVATION



Healthcare Management Specialisation

Some common questions we receive:

Question 01

Which types of candidates does this specialisation cater to?

Question 02

I am not targeting to be a hospital administrator specifically. Will this specialisation be suitable for me?



Healthcare Management Specialisation

Some common questions we receive:

Question 03

Can I still specialise in another specialisation in addition to Healthcare Management?

Question 04

What if I change my mind and want to switch specialisation?



The Team

MBA Coordinator



Leng Nur Ashikin Bte
Mhd Yusuf



nurashikin.leng@nus.edu.sg

SPH Coordinator



Teo Mou De



mdteo@nus.edu.sg

Chang Cher Sie



chersie@nus.edu.sg



Yang Chun Xuan



ephyc@nus.edu.sg



THANK YOU

HEALTHCARE MANAGEMENT
SPECIALISATION

